

# Rugged mobile receipt & label printer range

**RJ Series**  
mobile printers

[www.brother.eu](http://www.brother.eu)

***RJ Series***







**Empower  
workers to  
create and  
amend labels  
at any location**



Brother provide a comprehensive range of RJ mobile printers. They feature impressive print speeds and a rugged build quality to fit the requirements of a wide range of vertical market applications. Bluetooth, Wireless & USB connectivity options make it possible for busy mobile workers to print on site or in the field.



## RJ Series mobile printers



### Rugged design

Due to the nature of many mobile applications, printers may be exposed to a range of outdoor conditions which can affect the print operation or cause damage e.g. traffic warden printing in the field. However, RJ carries IP54 certification offering that extra piece of mind for such outdoor applications subject to damp /moisture or indoor environments where dust is present. In addition, The RJ range is drop tested up to 2.5 metres to provide extra credibility in terms of toughness and reliability.



RJ-2030

RJ-2050

RJ-2140

RJ-2150

RJ-3050

RJ-3150

RJ-4230B

RJ-4250WB

# Trust RJ Series mobile printers to take on every application

## Retail

Increase efficiency for retailers with lightweight, durable and easy to use mobile printers. This provides staff with a simple and accurate labelling and receipt solution, perfect for pricing, promotions and queue-busting to increase customer satisfaction.



### Applications include:

- Shelf edge labels
- 'Queue busting' receipt printing
- Mark down or discount labels
- Price labels
- Food traceability labelling



## Direct Store Deliveries

Agents need to be equipped with a seamless solution to help streamline their workflow and minimise downtime. Mobility and integration is key, so agents have access to systems providing pricing, invoicing, inventory control, and customer information. This makes it easier to produce invoices on-site.



### Applications include:

- Sales orders and confirmations
- Returned goods receipts and labels
- Customer receipts
- Delivery receipts



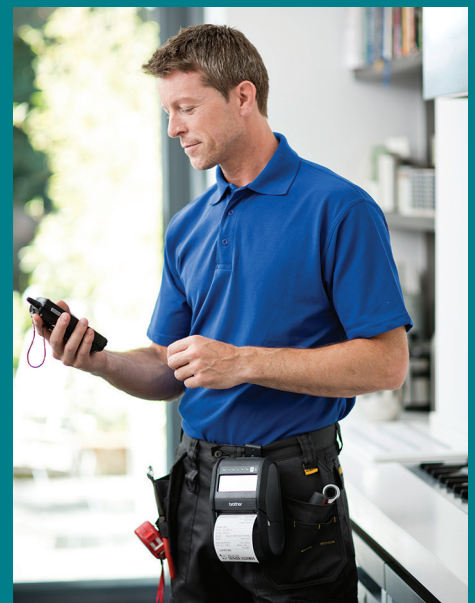
## Field Service

Whether you need receipts or smaller format labels, without a mobile print solution, handwritten documents are time consuming and prone to error. That's why most businesses are empowering their workforce with mobile technology, meaning they complete tasks on the move, professionally and on schedule.



### Applications include:

- Receipts and invoices
- Repair estimates
- Statements of work
- Work orders
- Estimates and quotations
- Maintenance and service reports





## RJ Series

### Public Safety

Increase operational efficiency by allowing law enforcement officers and emergency staff to document and report incidents more accurately and efficiently, at the point of interaction. With their rugged design, fast print speed & reliable operation, the range offers a competitive combination of performance and features.



#### Applications include:

- Parking violations
- Recording of accidents and crime scenes
- Electronic citations and fines
- Warning Notices



### Warehousing

Efficient warehousing operations and worker productivity are critical to the success of many companies. Using wireless connectivity, the Brother RJ mobile printer range provide workers with the ability to print barcode labels on-demand, at the point of application. This saves time and reduces potential errors caused by mislabelling.



#### Applications include:

- Work-in-progress labels
- Bin and shelf labels
- Shipping and despatch labels
- Inventory pick and return tickets





RJ series range brief summary

	RJ-2030	RJ-2050	RJ-2140	RJ-2150	RJ-3050	RJ-3150	RJ-4230B	RJ-4250WB
	2 Inch				3 Inch		4 Inch	

Printing

Print technology	Direct thermal				Direct thermal		Direct thermal	
Print speed	152mm/sec				127mm/sec		127mm/sec	
Resolution	203dpi				203dpi		203dpi	
Max print width	54mm (receipt)		54mm (receipt) 51mm (label)		72mm		104mm	

Media Types

Receipt	●	●	●	●	●	●	●	●
Labels			●	●		●	●	●

Connectivity

USB	●	●	●	●	●	●	●	●
Wireless LAN		●	●	●	●	●		●
Bluetooth	●	●		●	●	●	●	●
AirPrint		●	●	●	●	●		●
MFi		●		●			●	●

General

IP rating	IP54		IP54		IP54
Drop protection (metres)	2.5		1.2	1.8	2.1
Weight (with battery)	465g	545g	610g	680g	850g
Dimensions (mm)	122(w) 57(h) 100(d)	151(w) 73(h) 100(d)	113(w) 80(h) 186(d)	116(w) 82(h) 189(d)	153(w) 159(h) 68(d)
Operating system support	Microsoft® Windows Vista® Windows® 7 Windows® 8 Windows® 8.1 Windows® 10		Microsoft® Windows Vista® Windows® 7 Windows® 8 Windows® 8.1 Microsoft® Windows Server® 2008 2008 R2 / 2012 / 2012 R2		Microsoft® Windows® 7 Windows® 8 Windows® 8.1 Windows® 10  <b>RJ-4250WB also supports:</b> Microsoft® Windows Server® 2008 2008 R2 / 2012 / 2012 R2 / 2016
Mobile OS	Android	Android / iOS	Android / iOS		Android / iOS
Supported commands	P-touch Template, ESC/P, Raster, ZPL II emulation, CPCL emulation		P-touch Template, ESC/P, Raster, ZPL II emulation, CPCL emulation		P-touch Template, ESC/P, Raster, ZPL II emulation, CPCL emulation



Up to 2 inch



RJ-2030



RJ-2050



RJ-2140



RJ-2150

Up to 3 inch



RJ-3050



RJ-3150

Up to 4 inch



RJ-4230B



RJ-4250WB





**Customise your  
RJ printer with  
the great range  
of accessories**



# Accessories and print supplies

Brother has designed and engineered a wide range of accessories to help customise the solution, whatever your requirement. Brother accessories help workers to equip their device in-vehicle and on-body. Power options also help with increased battery demands.

## Power Options

### PA-BT-003

RJ-2000 Series only

**Li-ion rechargeable Battery**

RJ-2030 | RJ-2050  
RJ-2140 | RJ-2150



### PA-BT-001A PA-BT-001B

RJ-3000 Series only

**Li-ion rechargeable Battery**

RJ-3150 | RJ-3050

A

B



### PA-BT-006

RJ-4200 Series only

**Rechargeable Li-ion smart Battery**

RJ-4230B |  
RJ-4250WB



### PA-AD-600UK

Complete RJ Series

**AC Adapter (UK)**

Entire RJ Range



### PA-AD-600EU

Complete RJ Series

**AC Adapter (EU)**

Entire RJ Range



### PA-CD-600CG

Complete RJ Series

**Car Adaptor (cigarette)**

Entire RJ Range



### PA-CD-600WR

Complete RJ Series

**Car Adapter (wired)**

Entire RJ Range



## Additional Options

### PA-BC-002

RJ-2000 Series only

**Battery Charging Unit (single)**

RJ-2030 | RJ-2050  
RJ-2140 | RJ-2150



### PA-BC-001

RJ-3000 Series only

**Battery Charging Unit (single)**

RJ-3050 | RJ-3150



### PA-BC-003

RJ-4200 Series only

**Battery Charging Unit (single)**

RJ-4230B |  
RJ-4250WB



### PA-CR-001

RJ-3000 Series only

**Charging Cradle**

RJ-3050 | RJ-3150



### PA-CR-002

RJ-4200 Series only

**Car Mount / Charging Cradle**

RJ-4230B |  
RJ-4250WB



### PA-SS-4000

Complete RJ Series

**Shoulder Strap**

Entire RJ Range



## Media Options

### RD-R03E5

RJ-2000 / 4200 Series

**Continuous Receipt Roll**

**Roll Size:**  
58mm x 12m  
**Colour:** white



### RD-Q04E1

RJ-2140 / 2150

**Die-cut Labels Roll**

**Label Size:**  
51mm x 26mm  
**Colour:** white  
**Quantity:**  
450 per roll



### RD-P08E5

RJ-3000 Series

**Continuous Receipt Roll**

**Roll size:**  
76mm x 35m  
**Colour:** white

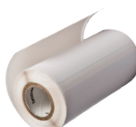


### RD-P09E1

RJ-3150 Series

**Die Cut Labels Roll**

**Label size:**  
76mm x 44mm  
**Colour:** white  
**Quantity:**  
335 per roll



### RD-M01E5

RJ-4200 Series

**Continuous Receipt Roll**

**Roll Size:**  
102mm x 27.5m  
**Colour:** white



### RD-M03E1

RJ-4200 Series

**Die Cut Labels Roll**

**Label Size:**  
102mm x 152mm  
**Colour:** white  
**Quantity:**  
70 per roll





Brother provides all the necessary tools required for software developers to integrate printing into their mobile applications. Printer drivers are available for Windows OS, and Software Development Kits can be provided to support Windows Mobile\*, Android and iOS operating systems.

## Software Support Features

### Template mode

Design the required document on your Windows PC, including logos and barcodes. Once transferred and stored in the printer's memory, the template can be recalled and any data replaced, before printing with just a few short commands.

### AirPrint\* and MFi\* support

Easily connect to, and print from Apple devices thanks to AirPrint and MFi support.







## Mobile Deploy

Cloud-based app for mobile devices (iOS and Android™), which allows IT administrators to remotely update and configure multiple Brother mobile printers. Using Mobile Deploy, the administrator can easily upload new update packages to an online location, and then share the URLs with the users.

## Printer Commands\*

With support for ZPL II emulation, CPCL emulation in addition to Brother ESC/P commands, developers can easily integrate mobile printing into existing legacy systems.

<https://www.brother.eu/developer>



\* Check model compatibility



# RJ series range

## 2 inch

RJ-2030		RJ-2050		RJ-2140		RJ-2150	
2 Inch		2 Inch		2 Inch		2 Inch	

### Printing / Media

Print technology	Direct thermal	
Print resolution	203dpi	
Print speed	Maximum 6ips (152mm/sec)*	
Maximum print width on receipt	54mm	
Maximum print length	1 metre	
Media sensor type	Reflective	Transmissive / Reflective
Cutter type	Tear bar	
Media types	Receipt, label**	Receipt, label, tag label
Receipt width	58mm max	
Receipt paper thickness	2.3-3.5 mils (0.058-0.090mm)	
Label width	-	55mm
Label thickness	-	3.1-6.7 mils (0.080-0.170mm)
Roll diameter	40mm max	50mm max
Core diameter	10.2mm	

### LCD

Type	Backlit monochrome LCD
------	------------------------

### Connectivity

USB	USB version 2.0 full-speed (mini-B connector)			
USB host capability	-			
Bluetooth	Bluetooth 2.1+EDR			
Bluetooth profiles	SPP (Serial Port Profile) OPP (Object Push Profile) BIP (Basic Imaging Profile) HCRP (Hard Copy Cable Replacement Profile)		SPP (Serial Port Profile) OPP (Object Push Profile) BIP (Basic Imaging Profile) HCRP (Hard Copy Cable Replacement Profile) iAP supported	
MFi support	-	Yes	-	Yes
Wireless LAN	-	IEEE802.11b/g/n Infrastructure mode: [b/g/n] Adhoc mode: [b/g/n] Wireless direct mode: [g/n]		
Wireless LAN security (AdHoc mode)	-	None / WEP		
Wireless LAN security (Infrastructure mode)	-	None/WEP64/WEP128 Common key authentication (WEP) WPA/WPA2-PSK (TKIP+AES) LEAP (CKIP) EAP-FAST (TKIP/AES) PEAP (TKIP/AES) *3 EAP-TLS (TKIP/AES) EAP-TTLS (TKIP/AES)		
Wireless LAN security (Wireless direct mode)	-	None / WPA2-PSK (AES) / WEP		

\* Under Brother standard environment

\*\* With black mark only

RJ-2030		RJ-2050		RJ-2140		RJ-2150	
2 Inch		2 Inch		2 Inch		2 Inch	

## Software / Firmware

Operating system support	Microsoft® Windows Vista® / Windows® 7 / Windows® 8 / Windows® 8.1 / Windows® 10 Android 4.0.3 or higher (SDK) iOS 6 or higher (SDK) (visit <a href="http://support.brother.com">http://support.brother.com</a> for latest OS support)
Microsoft® WHQL certified drivers	Yes
SDK availability (visit <a href="http://www.brother.eu/developer">http://www.brother.eu/developer</a> )	b-PAC (for Windows) Android 4.0.3 or higher (SDK) iOS 6 or higher (SDK)
Supported printer commands	ZPLII emulation CPCL emulation ESC/P P-touch Template Raster
Barcode symbologies	CODE39 / ITF (I-2/5) / EAN-13 / EAN-8 / UPC-A / UPC-E / CODABAR / CODE128 / GS1-128(UCC/EAN-128) / RSS symbols / CODE93 / POSTNET / UPC/EAN EXTENSION / MSI / QR Code (model 1, model 2, micro QR) / PDF417 (Standard, Truncate, MicroPDF417) / Data Matrix (ECC200 Square, ECC200 Rectangular) / MaxiCode / Aztec
Internal fonts	<ESC/P commands> Bitmap fonts: Gothic, Letter Gothic Bold, Helsinki. Font sizes: 16, 24, 32 dots Outline fonts: Gothic, Letter Gothic Bold, Helsinki. Font sizes: 400 dots (maximum) <P-touch Template commands> Outline fonts: Gothic, Letter Gothic Bold, Helsinki. Font sizes: 400dots (maximum)

## Memory

RAM	32MB
Flash	32MB (12MB available for template upload)

## Environmental

Drop protection*	2.5m
Sealing	IP54
Operating temperature	Operating: -10C to +50C / Charging: 0C to +40C
Operating humidity	10%-90% / Maximum web bulb: +27C (no condensation)
Storage temperature	-20C to +60C for 120 hours maximum
Storage humidity	+45C @ 95% for 120 hours maximum

## Power

Battery	Rechargeable Li-ion (7.2V)
AC adapter (optional accessory)	100-240V AC (50/60Hz) to 15V DC (only for charging)
Car adapter (optional accessory)	12V DC (only for charging)

## Weights / Dimensions

Dimensions	122(w) x 57(h) x 100(d) mm	151(w) x 73(h) x 100(d) mm
Weight (including battery)	465g	545g

## Included items

Supplied in box	Battery, Li-ion battery, belt clip, documentation
-----------------	---------------------------------------------------



# RJ series range

## 3 & 4 inch



### Printing / Media

Print technology	Direct thermal		
Print resolution	203dpi		
Print speed	Maximum 127mm/second (5ips)		
Maximum print width on receipt	72mm		104mm
Maximum print length	1 metre		3 metres
Media sensor type	Reflective	Transmissive / Reflective	Transmissive / Reflective
Cutter type	Tear bar		Double tear bar
Media types	Receipt / label*	Receipt / label / tag label	Receipt / label / Tag label
Receipt width	80mm		113mm
Receipt paper thickness	2.3-3.5 mils (0.058-0.090mm)		2.2 mil to 3.5 mil (0.058 mm to 0.090 mm)
Label width	-	76mm	113mm
Label thickness	-	3.2-6.7 mils (0.080-0.170 mm)	3.1 mil to 6.6 mil (0.080 mm to 0.170 mm)
Roll diameter	66mm max		58mm max
Core diameter	10.2mm (receipt)	10.2mm (receipt) / 25.4mm (labels)	12.7mm (receipt) / 25.4mm (labels)

### LCD

Type	-	Colour	Mono
------	---	--------	------

### Connectivity

USB	Yes		
USB host capability	-	Type A connector	-
Bluetooth	Bluetooth 2.1+EDR		Bluetooth 4.2 (supporting low energy)
Bluetooth profiles	SPP (Serial Port Profile) OPP (Object Push Profile)		Classic: SPP (Serial Port Profile) / OPP (Object Push Profile) / HCRP (Hard Copy Cable Replacement Profile) / iAP supported Low Energy: GATT
MFfi support	No		Yes
Wireless LAN	IEEE802.11b/g/n Infrastructure mode / Wireless direct mode: [b/g/n] Adhoc mode: [b] Wireless direct mode: [b/g/n]		- Wireless LAN IEEE802.11 [a/b/g/n] (Infrastructure mode: [a/b/g/n] / Wireless direct mode:[g/n])
Wireless LAN security (AdHoc mode)	None / WEP		- -
Wireless LAN security (Infrastructure mode)	None/WEP64/WEP128 Common key authentication (WEP) WPA/WPA2-PSK (TKIP+AES) LEAP (CKIP) EAP-FAST (TKIP/AES) PEAP (TKIP/AES) EAP-TLS (TKIP/AES) EAP-TTLS (TKIP/AES)		- Open system (None/WEP64/WEP128) Common key authentication (WEP) WPA/WPA2-PSK (TKIP+AES) EAP-FAST (TKIP/AES) PEAP (TKIP/AES) *3 EAP-TLS (TKIP/AES) EAP-TTLS (TKIP/AES)
Wireless LAN security (Wireless direct mode)	WPA2-PSK (AES)		- WPA2-PSK (AES)
NFC	-		Yes (Passive only)

\* Black mark only

RJ-3050		RJ-3150		RJ-4230B		RJ-4250WB	
3 Inch		3 Inch		4 Inch		4 Inch	

## Software / Firmware

Operating system support

Visit: <http://support.brother.com>  
for latest OS support

	Microsoft® Windows Vista® / Windows® 7 / Windows® 8 Windows® 8.1 / Windows® 10 Android 4.0.3 or higher (SDK) iOS 6 or higher (SDK) Visit <a href="http://support.brother.com">http://support.brother.com</a> for latest OS support	Microsoft® Windows Vista® / Windows® 7 / Windows® 8 Windows® 8.1 / Windows® 10	Microsoft® Windows Vista® / Windows® 7 Windows® 8 Windows® 8.1 / Windows® 10 / Microsoft® Windows Server® 2003 / 2008 / 2008 R2 / 2012 / 2012 R2
Microsoft® WHQL certified drivers	Yes		
SDK availability (visit <a href="http://www.brother.eu/developer">http://www.brother.eu/developer</a> )	Android 2.3 or later iOS 5 or later		Android 4.0.3 or later iOS 7 or later
Supported printer commands	ZPLII emulation / CPCL emulation / ESC/P / P-touch Template / Raster		
Barcode symbologies	Using ESC/P with P-touch Template CODE39, ITF(I-2/5), EAN-13 (JAN13), EAN-8(JAN8), UPC-A, UPC-E, CODABAR (NW-7), CODE128, GS1-128 (UCC/EAN-128), QR Code (model 1, model 2, micro QR), PDF417 (Standard, Truncate, MicroPDF417), DataMatrix (ECC200 Square, ECC200 Rectangular), MaxiCode, GS1 DataBar (Standard, Truncated, Stacked, Stacked Omnidirectional), GS1 DataBar Limited, GS1 DataBar Expanded (Standard, Stacked) Using only ESC/P UPC/EAN EXTENSION, CODE93, POSTNET		Linear: CODE 39, ITF(I-2/5), EAN-8, EAN-13, UPC-A, UPC-E, UPC/EAN EXTENSION CODABAR, CODE 128, GS1-128(UCC/EAN 128), POSTNET, GS1 Databar (Omnidirectional / Truncated / Stacked /Stacked Omnidirectional / Limited / Expanded / Expanded Stacked) CODE93, MSI/Plessey Intelligent Mail Barcode  2-dimensional: QR Code (model 1, model 2, micro QR), Maxi code, PDF417 (Standard, Truncate) MicroPDF417, Data Matrix (Square, Rectangular) AztecCode

## Memory

RAM	32MB	256MB
Flash	32MB	64MB

## Environmental

Drop protection	1.2 metres	1.8 metres	2.1 metres
Sealing	IP54		
Operating temperature	Operating: -10°C to +50°C / Charging: 0°C to +40°C		Battery: -20°C to 55°C AC adapter: -10°C to 40°C Car adapter: -10°C to 50°C
Operating humidity	10-90%, Max wet bulb: 27 deg C (No condensation)		10% - 90% , Max wet bulb: 27 deg C (No condensation)
Storage temperature	-20°C to +60 deg C		
Storage humidity	10-90%, Max wet bulb: 45 deg C (No condensation)		10% - 90% , Max wet bulb: 45 deg C (No condensation)

## Power

Battery (Option)	Rechargeable Li-ion (7.2V)	Rechargeable Li-ion (7.2V) smart battery
AC adapter (optional accessory)	AC adapter (15 V) only for charging (50/60Hz)	
Car adapter (optional accessory)	Cigarette car adapter or Wired type (12 V (DC)) only for charging	

## Weights / Dimensions

Dimensions (in mm)	113(w) x 80(h) x 186(d)	116(w) x 82(h) x 189(d)	153(w) x 68(h) x 159(d) mm
Weight (including battery)	610g	680g	850g

## Included items

Supplied in box	Printer Li-ion battery (PA-BT-001-B) Belt clip Documentation	Printer Li-ion battery (PA-BT-001-A) Button type battery Belt clip Documentation	Printer Belt clip Adjuster guide lockers Documentation
-----------------	--------------------------------------------------------------------------	-------------------------------------------------------------------------------------------------	-----------------------------------------------------------------



# brother

at your side

Contact:

**[www.brother.eu](http://www.brother.eu)**

**Brother International Europe Ltd**

Brother House, 1 Tame Street, Audenshaw,  
Manchester M34 5JE

Tel: +44(0)161 330 6531

Fax: +44(0)161 330 5520

All specifications correct at the time of printing and are subject to change. Brother is a registered trademark of Brother Industries Ltd.  
Brand product names are registered trademarks or trademarks of their respective companies.